

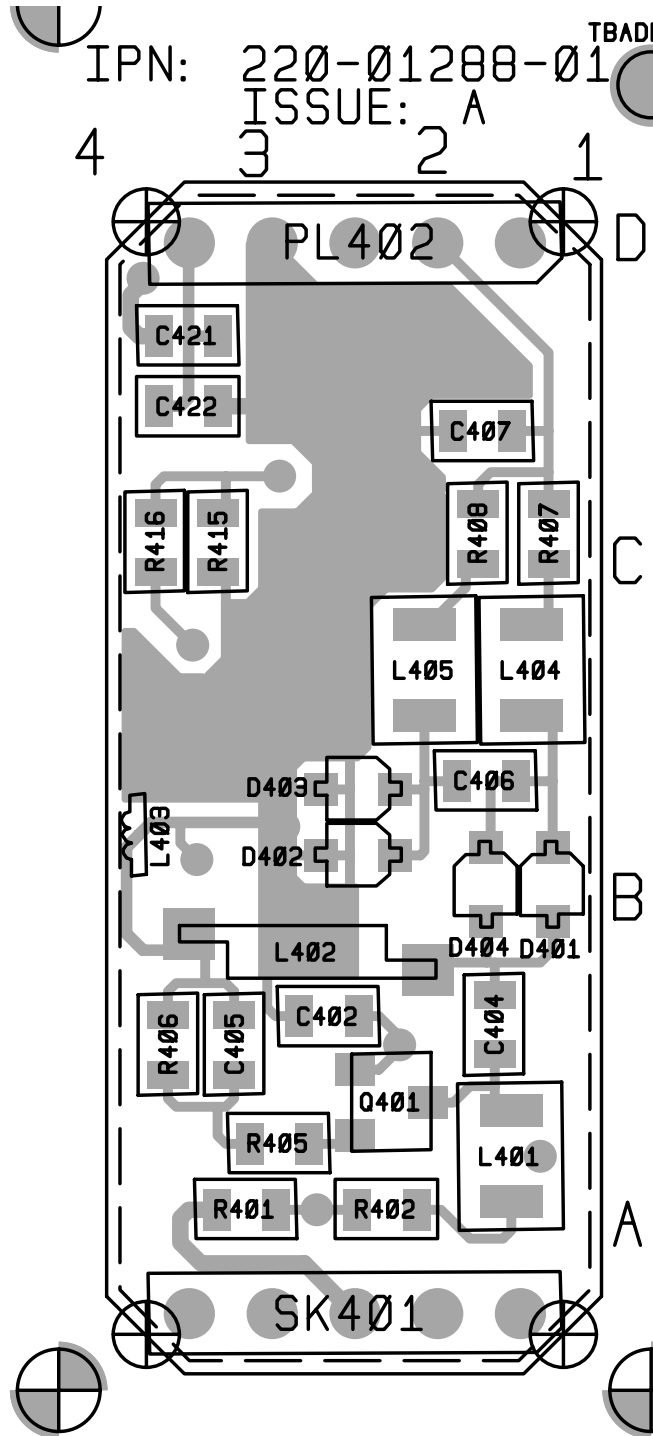
6.8 T3000-7000 VCO PCB

T3000-7000 VCO Parts List (IPN 220-01288-01)

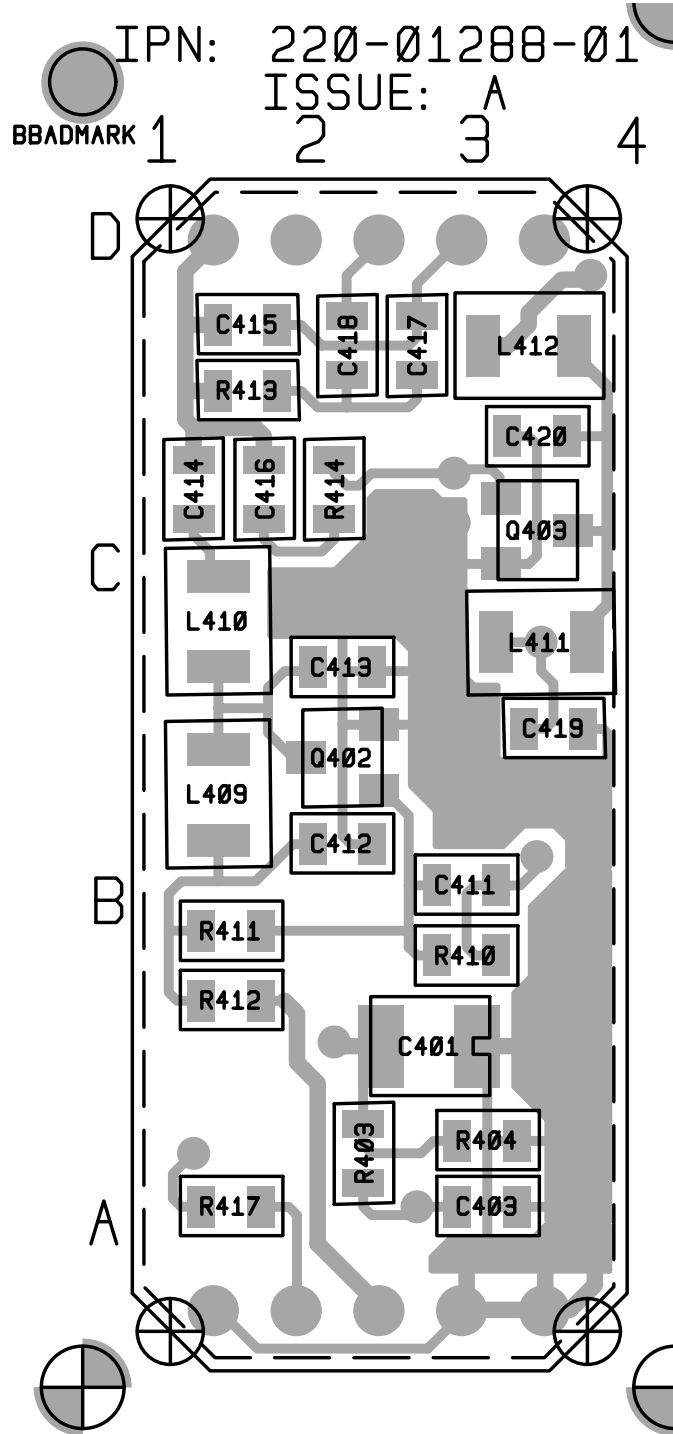
Ref	Var	IPN	Description	Ref	Var	IPN	Description
C401		014-07470-00	CAP TANT CHIP 4U7 3.5 X 2.8MM 267 SERIE				
C402		015-23150-01	CAP CER 0805 CHIP 150P 5% NPO 50V				
C403		015-25100-08	CAP CER 0805 CHIP 10N 10% X7R 50V				
C404		015-21220-01	CAP CER 0805 CHIP 2P2 +/-0.25P NPO 50V				
C405		015-23150-01	CAP CER 0805 CHIP 150P 5% NPO 50V				
C406	70XX	015-22120-01	CAP CER 0805 CHIP 12P 5% NPO 50V				
C406	71XX	015-22150-01	CAP CER 0805 CHIP 15P 5% NPO 50V				
C407		015-23150-01	CAP CER 0805 CHIP 150P 5% NPO 50V				
C411		015-21560-01	CAP CER 0805 CHIP 5P6 +/-0.25P NPO 50V				
C412		015-25100-08	CAP CER 0805 CHIP 10N 10% X7R 50V				
C413		015-21330-01	CAP CER 0805 CHIP 3P3 +/-0.25P NPO 50V				
C414		015-22330-01	CAP CER 0805 CHIP 33P 5% NPO 50V				
C415		015-21180-01	CAP CER 0805 CHIP 1P8 +/-0.25 NPO 50V				
C416		015-21330-01	CAP CER 0805 CHIP 3P3 +/-0.25P NPO 50V				
C417		015-21330-01	CAP CER 0805 CHIP 3P3 +/-0.25P NPO 50V				
C418		015-23150-01	CAP CER 0805 CHIP 150P 5% NPO 50V				
C419		015-25100-08	CAP CER 0805 CHIP 10N 10% X7R 50V				
C420		015-21330-01	CAP CER 0805 CHIP 3P3 +/-0.25P NPO 50V				
C421		015-22220-01	CAP CER 0805 CHIP 22P 5% NPO 50V				
C422		015-21220-01	CAP CER 0805 CHIP 2P2 +/-0.25P NPO 50V				
D401		001-10006-39	(S) DIODE SMD VARICAP BB639 SOD323				
D402		001-10006-39	(S) DIODE SMD VARICAP BB639 SOD323				
D403		001-10006-39	(S) DIODE SMD VARICAP BB639 SOD323				
D404		001-10006-39	(S) DIODE SMD VARICAP BB639 SOD323				
L401		056-10330-00	IND FXD SMD 330NH 3.2*2.5*1.6 SIEMENS S				
L402	70XX	052-56336-20	COIL A/W 2.0T/3.6MM SMD 0.56 WIRE				
L402	71XX	052-56325-20	COIL A/W 2.0T/2.5MM SMD 0.56 WIRE				
L404		056-10330-00	IND FXD SMD 330NH 3.2*2.5*1.6 SIEMENS S				
L405		056-10330-00	IND FXD SMD 330NH 3.2*2.5*1.6 SIEMENS S				
L409		056-10820-00	IND FXD SMD 820NH 3.2*2.5*1.6 SIEMENS S				
L410		056-10047-00	IND FXD SMD 47NH 3.2*2.5*1.6 SIEMENS SM				
L411		056-10820-00	IND FXD SMD 820NH 3.2*2.5*1.6 SIEMENS S				
L412		056-10047-00	IND FXD SMD 47NH 3.2*2.5*1.6 SIEMENS SM				
PL402		240-00026-27	CONN 5WAY MALE INTERCONNECT STRIP PCB				
Q401		000-10009-41	(S) XSTR SMD MMBR941L RF LOW NOISE SOT2				
Q402		000-10009-41	(S) XSTR SMD MMBR941L RF LOW NOISE SOT2				
Q403		000-10009-41	(S) XSTR SMD MMBR941L RF LOW NOISE SOT2				
R401		036-12220-00	RES M/F 0805 CHIP 22E 5%				
R402		036-12470-00	RES M/F 0805 CHIP 47E 5%				
R403		036-14470-00	RES M/F 0805 CHIP 4K7 5%				
R404		036-14220-00	RES M/F 0805 CHIP 2K2 5%				
R405		036-12470-00	RES M/F 0805 CHIP 47E 5%				
R406	70XX	036-13470-00	RES M/F 0805 CHIP 470E 5%				
R406	71XX	036-13390-00	RES M/F 0805 CHIP 390E 5%				
R407		036-12470-00	RES M/F 0805 CHIP 47E 5%				
R408		036-12470-00	RES M/F 0805 CHIP 47E 5%				
R410		036-14100-00	RES M/F 0805 CHIP 1K 5%				
R411		036-14330-00	RES M/F 0805 CHIP 3K3 5%				
R412		036-13270-00	RES M/F 0805 CHIP 270E 5%				
R413		036-13180-00	RES M/F 0805 CHIP 180E 5%				
R414		036-12390-00	RES M/F 0805 CHIP 39E 5%				
R415		036-14100-00	RES M/F 0805 CHIP 1K 5%				
R416		036-14330-00	RES M/F 0805 CHIP 3K3 5%				
R417		036-13220-00	RES M/F 0805 CHIP 220E 5%				
SK401		240-02010-91	CONN 5WAY FEM LOW PROF SKT STRIP PCB M				
		220-01288-01	PCB T3000 330-360MHZ VCO				

Note: The first character in the variant column refers to frequency band, the second refers to frequency sub-band, as follows:

70XX 330-360MHz
71XX 360-400MHz



T3000-7000 VCO PCB (IPN 220-01288-01) - Top Side



T3000-7000 VCO PCB (IPN 220-01288-01) - Bottom Side

